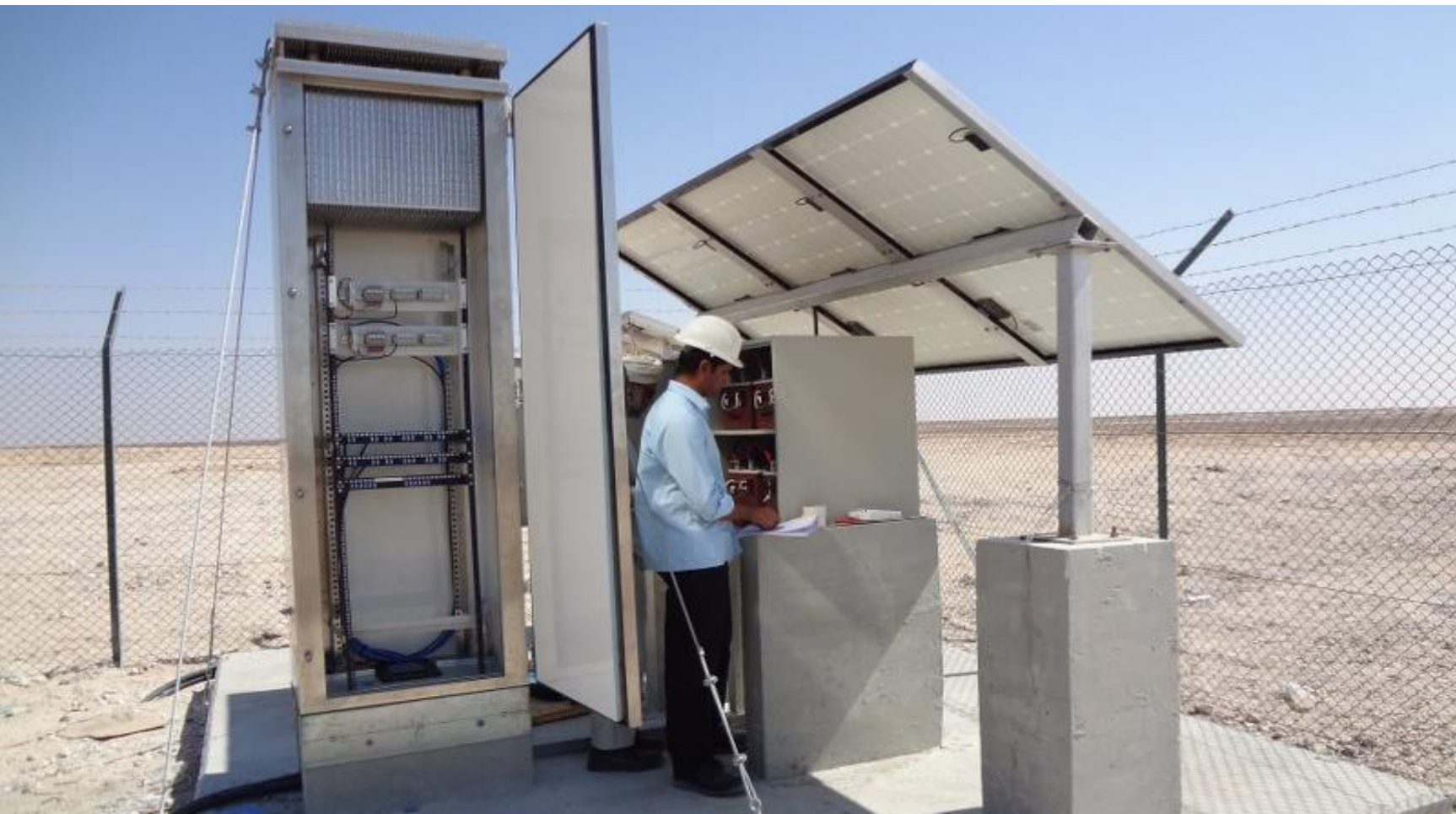


# The Passive Cooled Cabinet

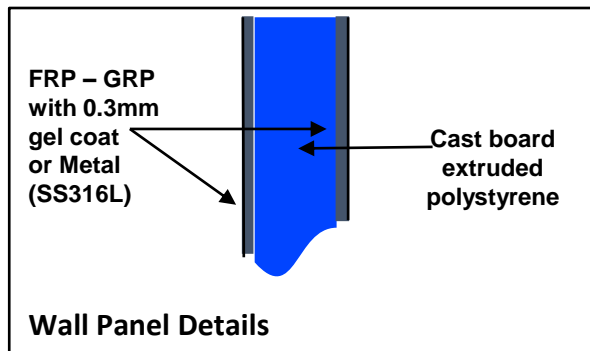
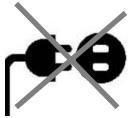


# The Passive Cooled Cabinet



## KEY FEATURES:

- **FULLY PASSIVE CONDITIONING**  
( no power needed)
- **NO MAINTENANCE REQUIRED**
- **OUTDOOR APPLICATIONS (IP66 tightness)**
- **NO EMISSIONS**
- **INNOVATIVE “THREE IN ONE PASSIVE” MODULE**  
(patented)
- **PHASE CHANGE MATERIAL to improve performances**
- **OUTDOOR APPLICATIONS (IP66 tightness)**
- **TAILORED DESIGN to PROJECT REQUIREMENTS**
- **READY TO INSTALLATION AND OPERATION**
- **AVAILABLE FROM 10U TO 42U RACK**
- **INSULATED STRUCTURE**
- **MINIMUM CIVIL WORKS AT SITE**



# The Operating Principle

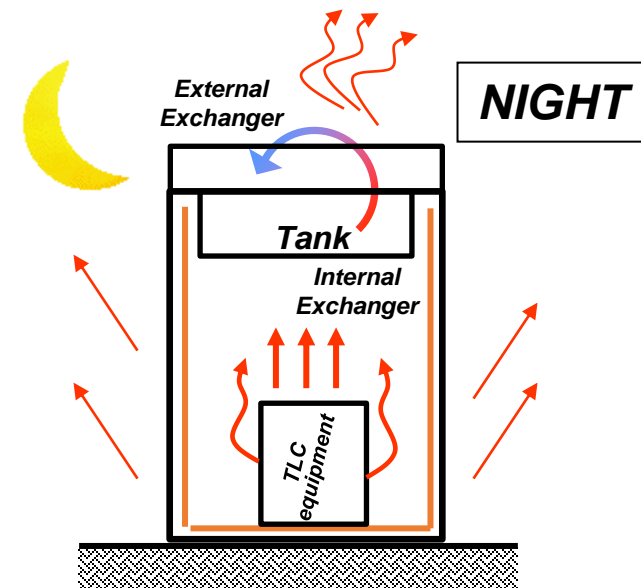
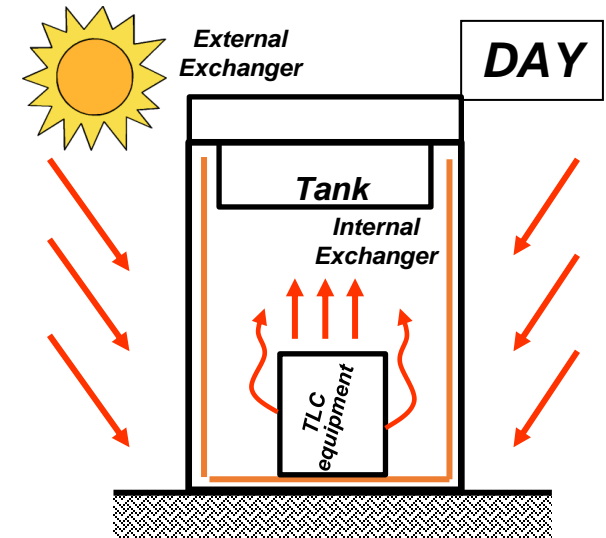
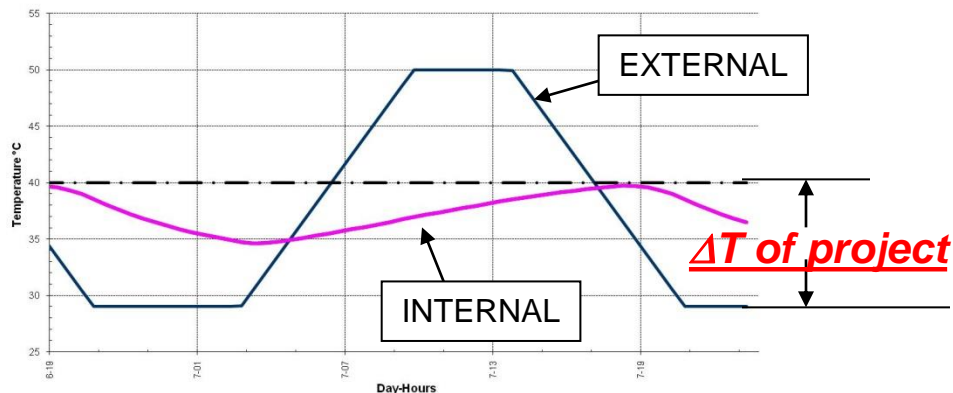
In a passive cabinet the energy required to its conditioning is entirely given by the temperature range between the **minimum night** temperature and the **maximum one** allowed in it.

## DIURNAL PHASE

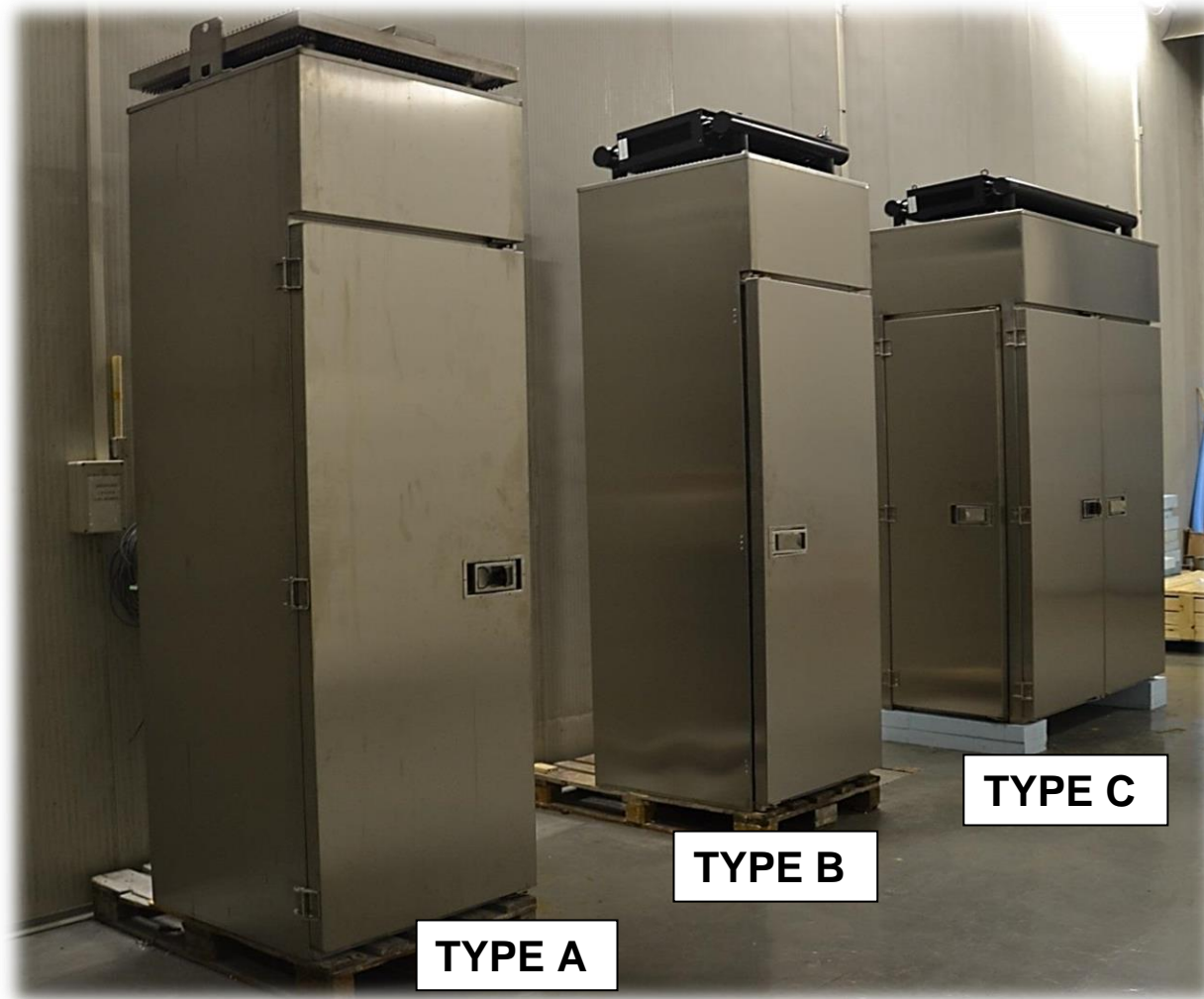
The heat given by the internal systems, add to the contribution due to the environmental stress, is accumulated in the tank through the internal exchanger, warming in this way the water in it .

## NOCTURNAL PHASE

The water in the external exchanger cools down starting the process of circulation in the closed circuit (natural convention) till its complete regeneration.



# *Proposed Cabinet Typologies*



**AVAILABLE  
ALSO IN  
FIBERGLASS**



***ANY TYPOLOGY CAN BE COSTUMIZED IN TERMS OF DIMENSIONS, FITTING AND PERFORMANCE***



# *Other example in GRP - details*



***PASSIVE COOLED CABINETS  
SUPPLIED TO  
EGYPTIAN MINISTRY OF DEFENSE***



✓ Double Passive Cooling Module



✓ Built-in Handles in S.S.



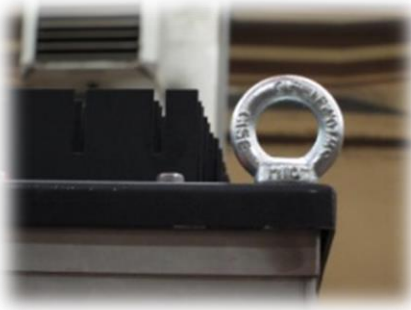
✓ Heavy Duty S.S. Hinges



✓ Internal Locking Mechanism

***ANY TYPOLOGY CAN BE COSTUMIZED IN TERMS OF DIMENSIONS, FITTING AND PERFORMANCE***

# Additional Features



✓ Lifting Hooks



✓ Passive Cooling Module



✓ Built-in Handles



✓ Heavy Duty  
S.S. Hinges



✓ Customizable Rack  
& Internal Fittings



✓ Manufactured with high  
Precision CC machinery



✓ Embedded MCT  
✓ Labels

# *Process and ATEX applications*



**ANY TYPOLOGY CAN BE COSTUMIZED IN TERMS OF DIMENSIONS, FITTING AND PERFORMANCE**



**Engineering the energy saving**

**Celant.Tel srl**

Via Pellizzari 28 20871 Vimercate (MB) - ITALY

Ph. +39 0396084217 Fax +39 0396084213

[info@celantel.com](mailto:info@celantel.com)

<https://www.celantel.com/cabinet/#passive-cabinet>

**[www.celantel.com](http://www.celantel.com)**